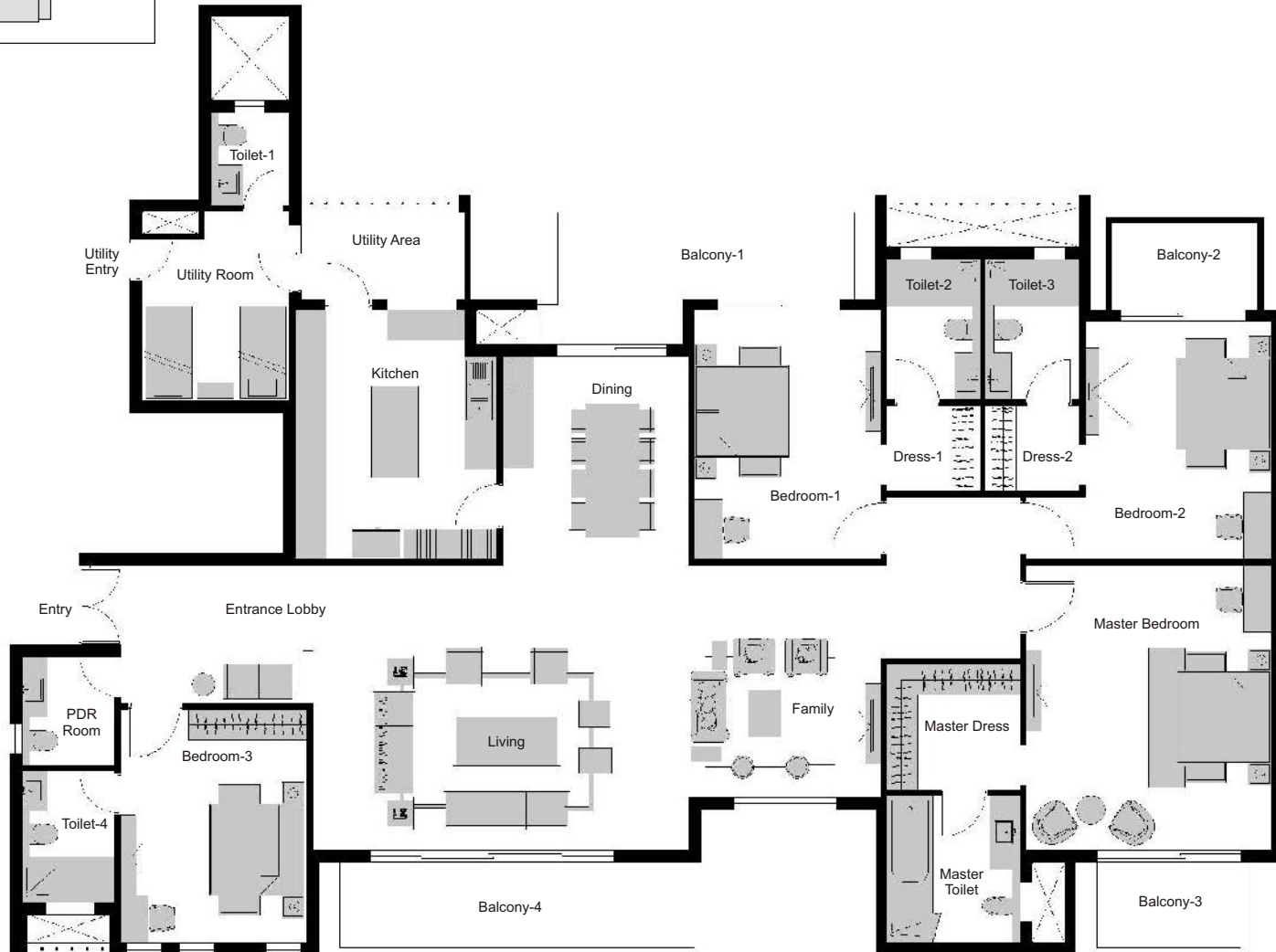
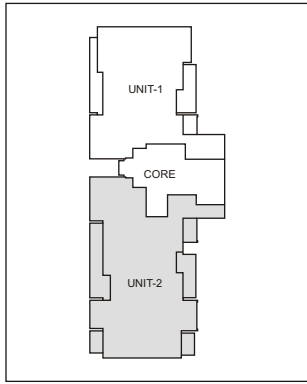


Experion Windchants Gurgaon Floor Plan, 4BHK 4525

Waving Teak (4 BHK) Unit Plan

Typical Unit Plan - Unit 2 (4 BHK)

(4th, 8th, 12th, 17th, 21st) Sale Area: 4525 (sq. ft.)



	MM	Feet-Inch
Master Bedroom	4800 x 5595	15'-9" x 18'-4"
Bedroom-1	3655 x 4880	12'-0" x 16'-0"
Bedroom-2	3650 x 4675	12'-0" x 15'-4"
Bedroom-3	3655 x 4580	12'-0" x 15'-0"
Master Dress	2615 x 2460	8'-7" x 8'-1"
Dress-1	1830 x 1675	6'-0" x 5'-6"
Dress-2	1830 x 1675	6'-0" x 5'-6"
Kitchen	3960 x 4880	13'-0" x 16'-0"

	MM	Feet-Inch
Dining	3655 x 4090	12'-0" x 13'-5"
Family	3770 x 4570	12'-4" x 15'-0"
Living	7385 x 5600	24'-3" x 18'-4"
Entrance Lobby	3770 x 2720	12'-5" x 8'-11"
Balcony-1	6030 x 1800	19'-9" x 6'-0"
Balcony-2	2935 x 1800	9'-7" x 6'-0"
Balcony-3	3050 x 1800	10'-0" x 6'-0"
Balcony-4	7200 x 1800	23'-7" x 5'-11"

	MM	Feet-Inch
Master Toilet	2615 x 2895	8'-7" x 9'-6"
Toilet-1	1545 x 1830	5'-0" x 6'-0"
Toilet-2	1830 x 2750	6'-0" x 9'-0"
Toilet-3	1830 x 2750	6'-0" x 9'-0"
Toilet-4	1830 x 2590	6'-0" x 8'-6"
PDR Room	1830 x 2130	6'-0" x 7'-0"
Utility Room	2895 x 3715	9'-6" x 12'-2"
Utility Area	3330 x 1930	10'-11" x 6'-4"

Disclaimer :

1. The furniture and its arrangement is indicative and not included in the apartment. 1sqm = 10.764 sft
2. All plans, specifications, artistic renderings and images as shown in this page are only indicative and are subject to change as may be decided by the company or directed by any competent authority in the best interests of the development. Soft furnishing, furniture and gadgets do not form a part of the offering.